

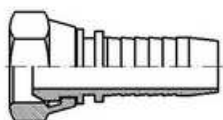
**SERIE STANDARD**



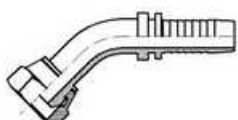
**SERIE INTERLOCK 4SH, R13, R15**



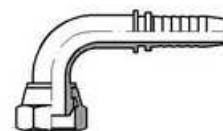
## RACCORDI A PRESSARE INOX AISI 316



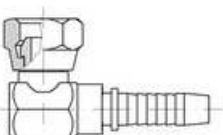
FEMMINA DIRITTA BSP CONO 60°



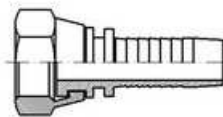
FEMMINA 45° BSP CONO 60°



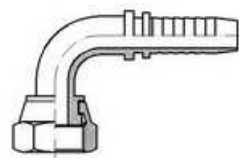
FEMMINA 90° BSP CONO 60°



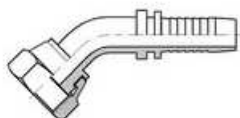
FEMMINA 90° COMPATTA BSP CONO 60°



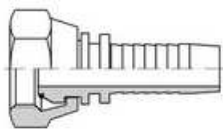
FEMMINA DIRITTA SEDE PIANA BSP



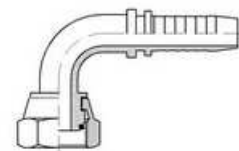
FEMMINA 90° SEDE PIANA BSP



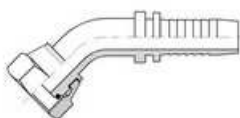
FEMMINA 45° SEDE PIANA BSP



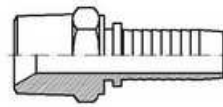
FEMMINA DIRITTA BSP CONO 60° C/O-RING



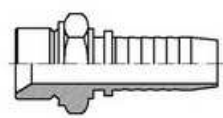
FEMMINA 90° BSP CONO 60° C/O-RING



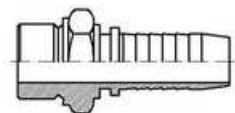
FEMMINA 45° BSP CONO 60° C/O-RING



MASCHIO CONICO BSPT CONO 60°

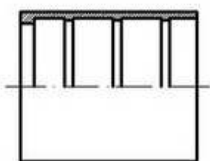


MASCHIO CILINDRICO BSP CONO 60°

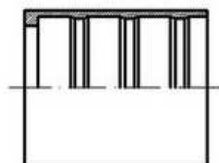


MASCHIO CILINDRICO BSP SEDE PIANA

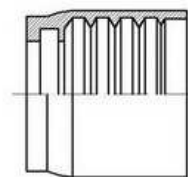
**BOCCOLE A PRESSARE INOX AISI 316**



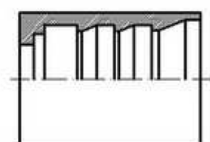
**BOCCOLA R7 - R8**



**BOCCOLA PER TEFLON LISCIO**

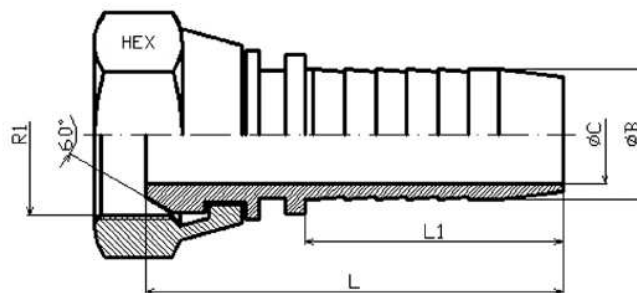


**BOCCOLA R1AT/R2AT/1SN/2SN/R16/2SC**



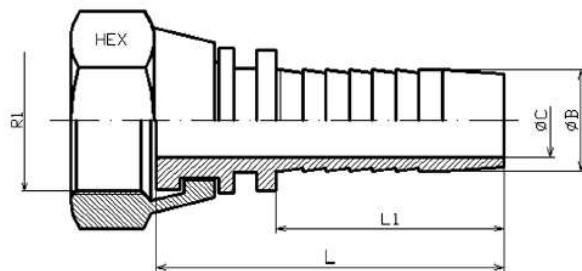
**BOCCOLA R2A-2ST/4SP DIN 20023**

## RACCORDO A PRESSURE FEMMINA BSP CONO 60° AISI 316



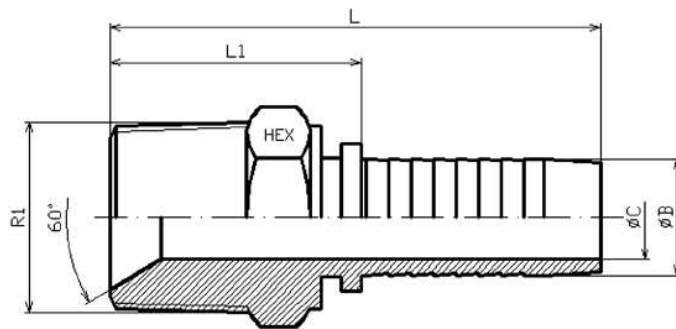
Referencia Référence Part N°. Bestell N°.	Rosca Filetage Thread Gewinde	Rosca Filetage Thread Gewinde	Tubo Pipe Tube Schlauch	Dimensiones Dimmensions Dimensions Masszahlen						
	R1	R2	B	L	L1	L2	A	C	D	HEX
841000203	1/8"		3/16"	38,5	24			3		14
841000204	1/8"		1/4"	43	28			4		14
841000403	1/4"		3/16"	39,5	24			3		19
841000404	1/4"		1/4"	44	28			4		19
841000405	1/4"		5/16"	44,5	28			5,5		19
841000604	3/8"		1/4"	45,5	28			4		22
841000605	3/8"		5/16"	46	28			5,5		22
841000606	3/8"		3/8"	47,5	29,5			7		22
841000608	3/8"		1/2"	48	29,5			9,5		22
841000806	1/2"		3/8"	48,5	29,5			7		27
841000808	1/2"		1/2"	48,5	29,5			9,5		27
841000810	1/2"		5/8"	53,3	34			12		27
841001008	5/8"		1/2"	50	29,5			9,5		30
841001010	5/8"		5/8"	54,8	34			12		30
841001208	3/4"		1/2"	52	29,5			9,5		32
841001210	3/4"		5/8"	56,8	34			12		32
841001212	3/4"		3/4"	63	39			15		32
841001612	1"		3/4"	66,5	39			15		41
841001616	1"		1"	74,5	47			19		41
841002016	1" 1/4		1"	75,5	47			19		50
841002020	1" 1/4		1" 1/4	84,5	54,5			26		50
841002420	1" 1/2		1" 1/4	88,5	54,5			26		55
841002424	1" 1/2		1" 1/2	92	58			32		55
841003224	2"		1" 1/2	91,5	58			32		70
841003232	2"		2"	105	72			44		70

## RACCORDO A PRESSARE FEMMINA SEDE PIANA BSP AISI 316



Referencia Référence Part N°. Bestell N°.	Rosca Filetage Thread Gewinde	Rosca Filetage Thread Gewinde	Tubo Tube Pipe Schlauch	Dimensiones Dimensions Dimensions Masszahlen						
	R1	R2	B	L	L1	L2	A	C	D	HEX
842000404	1/4"		1/4"	41	28			4		19
842000604	3/8"		1/4"	42,5	28			4		22
842000605	3/8"		5/16"	43	28			5,5		22
842000606	3/8"		3/8"	44,5	29,5			7		22
842000608	3/8"		1/2"	45	29,5			9,5		22
842000804	1/2"		1/4"	42,5	28			4		27
842000806	1/2"		3/8"	44,5	29,5			7		27
842000808	1/2"		1/2"	45	29,5			9,5		27
842001208	3/4"		1/2"	48	29,5			9,5		32
842001210	3/4"		5/8"	52,8	34			12		32
842001212	3/4"		3/4"	59	39			15		32
842001616	1"		1"	69	47			19		41
842002020	1" 1/4		1" 1/4	79,5	54,5			26		50
842002424	1" 1/2		1" 1/2	83,5	58			32		55
842003232	2"		2"	103	72			44		70

## RACCORDO A PRESSARE MASCHIO CONICO BSPT AISI 316



Referencia Référence Part N°. Bestell N°.	Rosca Filetage Thread Gewinde	Rosca Filetage Thread Gewinde	Tube Tube Pipe Schlauch	Dimensiones Dimensions Dimensions Masszahlen						
	R1	R2	B	L	L1	L2	A	C	D	HEX
841140404	1/4" BSPT		1/4"	53,5	25,5			4		17
841140405	1/4" BSPT		5/16"	54	26			5,5		17
841140406	1/4" BSPT		3/8"	55,5	26			7		17
841140604	3/8" BSPT		1/4"	55	27			4		19
841140605	3/8" BSPT		5/16"	55	27			5,5		19
841140606	3/8" BSPT		3/8"	57	27,5			7		19
841140806	1/2" BSP		3/8"	62	32,5			7		22
841140808	1/2" BSP		1/2"	62,5	33			9,5		22
841141208	3/4" BSPT		1/2"	65,5	36			9,5		30
841141210	3/4" BSPT		5/8"	70,3	36,3			12		30
841141212	3/4" BSPT		3/4"	78	39			15		30
841141612	1" BSPT		3/4"	81	42			15		36
841141616	1" BSPT		1"	89	42			19		36
841142016	1" 1/4 BSPT		1"	96	49			19		46
841142020	1" 1/4 BSPT		1" 1/4	105	50,5			26		46
841142420	1" 1/2 BSPT		1" 1/4	100,5	46			26		50
841142424	1" 1/2 BSPT		1" 1/2	104	46			32		50
841143232	2" BSPT		2"	125	53			44		65